



Artwork Created in Bing Image Creator, Microsoft Designer

Sponsored by

Cheshire Grange, No. 23

August 23rd & 24th, 2025 - From: 9:30 AM to 5:00 PM

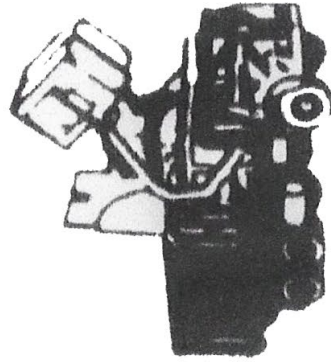
At the Cheshire Grange Hall, 44 Wallingford Rd.,

Cheshire, CT

www.cheshiregrange.org/grangeagfair.asp



SINCE 1960



Call **AJ**

A.J. WALLINGER
President

WASTE · SYSTEMS, LLC

— (203) 272-1992 —



**REFUSE &
RECYCLING SERVICES
CHESHIRE &
SURROUNDING TOWNS**

CHESHIRE FAIR SCHEDULED EVENTS

SATURDAY, AUGUST 23

10:00 FAIR OPENS

YOUTH DEPARTMENT DEMONSTRATIONS

1:30 WATER BALLOON CONTEST

2:00 PIE EATING CONTEST

3:30 ROLLING PIN CONTEST (Women Over 16 Only)

4:00 RUBBER Mallet THROW (Men Over 16 Only)

5:00 FAIR CLOSES

SUNDAY, AUGUST 24

10:00 FAIR OPENS

4:00 AUCTION followed by GIFT BASKETS & CLOSING

**COME TO THE
BEST BAKE SALE IN TOWN!**

Friday night, Saturday & Sunday

Concessions & Exhibits

Supt: Charles Dimmick

Tel: (203) 272-6072

cdimmick@snet.net



| Special Feature |

ROAST BEEF DINNER

Sunday, August 24th

SERVINGS AT 12:15 & 1:30 PM

Family Style Service

Adults - \$20.00 ... Children 5-12 - \$10.00

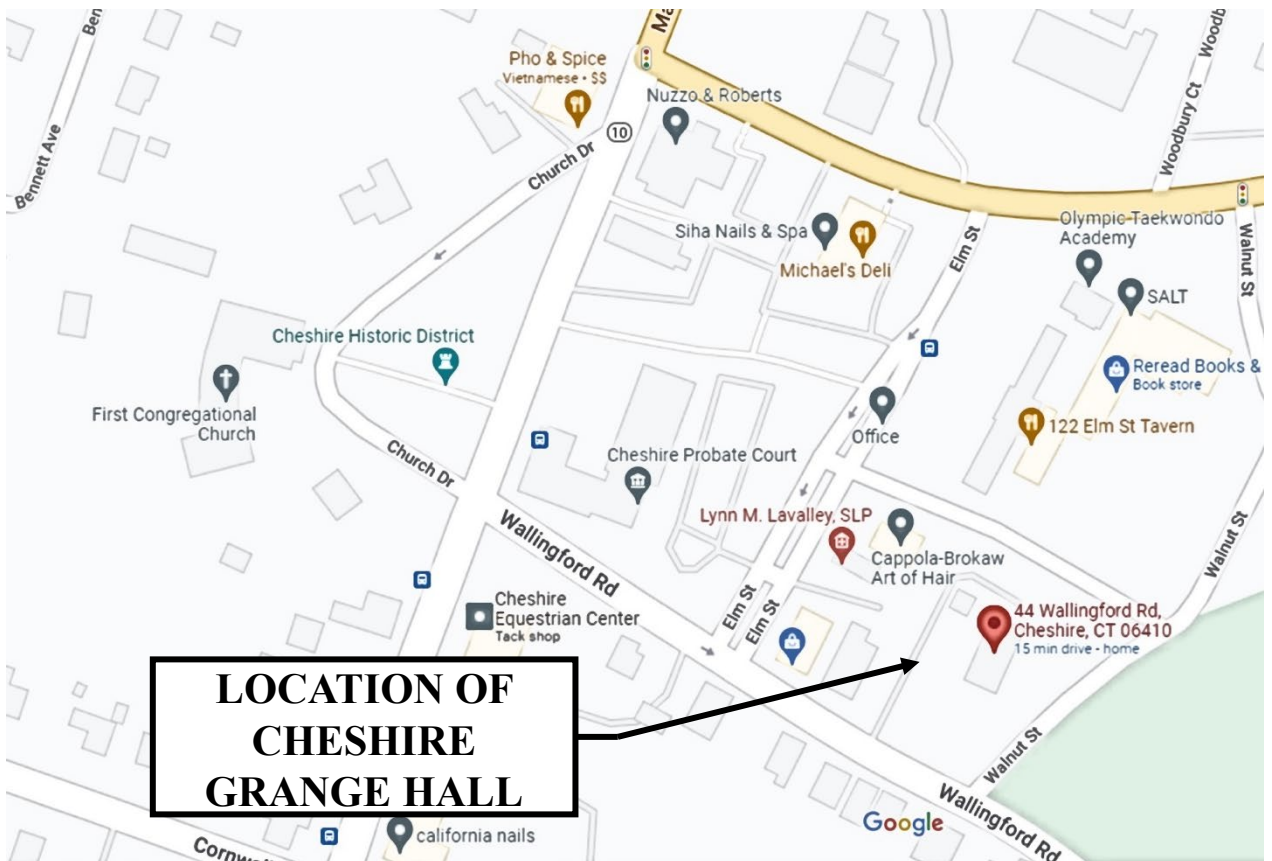
Under 5 - Free

FOR RESERVATIONS ... CALL Jane Miller

at (203) 272-8255

Cell Phone during Fair: (203) 215-5198

(All Unpaid Reservations must be picked up 15 minutes prior to scheduled serving time or they will be put up for sale)



Premium Book Table of Contents

Rules and Regulations	5
Cheshire Fair Officers	6
Cheshire Fair Booster List	6
DEPT. A – Needlework and Sewing	6
DEPT. B – Baking & Canning	7
DEPT. C – Art, Crafts & Collections	7
DEPT. D – Photography	8
DEPT. E – Flowers	8
DEPT. F – Fruit, Vegetables & Eggs	9
DEPT. Y – YOUTH	9
Association of CT Fairs State Contests	11
Cheshire Grange Community Fair	
Adult & Youth Entry Blanks	21 & 24



RULES & REGULATIONS

- The Cheshire Grange Community Fair Entry Blank (enclosed) must be completed and returned to the Secretary no later than Monday, August 18th.
- The Cheshire Grange Community Fair will endeavor to protect all exhibits but will not be responsible for loss or damage. A qualified person will be on hand at all times to watch and supervise the exhibits.
- Please see individual Departments for special rules and for times exhibits will be accepted.
- No exhibits may be removed from the Fair before 5:00 p.m. Sunday, but all must be removed by 6:00 p.m. Any exhibits removed before 5:00 p.m. will not be awarded premium money.
- Each article will be judged by its own merits. Agricultural exhibits must be grown by the Exhibitor.
- No article may be exhibited in more than one lot.
- Articles may be reclassified if deemed necessary by the Superintendent.
- The Fair reserves the right to prorate premiums.
- Articles which have been previously exhibited at the Cheshire Grange Community Fair should not be exhibited again except for Collections which have been added to since they were last exhibited.
- Competent Judges will be secured. Any person interfering with a Judge while executing their duties will be excluded from competition.
- Premiums will be paid as soon after the Fair as possible. If any exhibitor fails to receive their premiums by December 1st, they should notify the Secretary. Youth Premiums will be paid at 4:00 p.m. on Sunday.
- Entry Fee for Adult Exhibitors will be \$1.00 per person for as many items as they wish to enter.
- Entry Fee for Youth Exhibitors entering **Dept. Y** only is **25 cents** per person for as many items as they wish to enter. **All others must pay the \$1.00 entry fee.**
- Admission to the Cheshire Grange Community Fair is FREE.
- Exhibitors must have the written permission of the Department Superintendent to sell their exhibits. The Fair will receive a 5% Commission on all items sold. Nothing may leave before 5:00 p.m. Sunday.
- All Ribbons must be claimed. None will be mailed.
- Entry Blanks can be found on pp. 21 & 22. Youth Dept Entry Blanks are on pp. 23 & 24. Official entry blanks must be used. Printed copies of this form will be accepted. Additional blanks are available from the Secretary or as a download on our website.
- Only new, clean items may be exhibited. Superintendents may disqualify any item which is used or soiled.
- Only authorized personnel may remain on premises overnight. (A pass signed by the Fair President is required.)

The Cheshire Grange Community Fair

Grange Hall and surrounding grounds

44 Wallingford Road, Cheshire

President..... A. Ruel Miller
90 Brook Lane ... (203) 272-8255

e-mail jfrm888@gmail.com

1st Vice President Charles Wm. Dimmick

2nd Vice President David Calabro

Secretary/Treasurer Ruel & Jane Miller
90 Brook Lane ... (203) 272-8255

e-mail jfrm888@gmail.com

Grannies' Attic Maryalyce Lee, Karen Turner

Concessions Charles Dimmick (203) 272-6072

Publicity Bob Charbonneau, A. Ruel Miller

Grannie's Attic Sale

Friday Night and all-day Saturday & Sunday,
August 22, 23 & 24 At the FAIR!

Giant Tag Sale in Grange Hall – Bargains Galore

**Come Early for Best Selection – Come Late for
Best Bargains**

BOOSTERS 2025

Greg Ami	Melvin Houston
Allison Bailey	Cindy Hupper
Tatum Bailey	Ann Jamele
Tyler Bailey	Megan Jeffery
Diane and Dave Calabro	Maryalyce Lee
John Carmody	Karen, Alie, and Bella Marino
Bob Charbonneau	Lu and Kent Marshal
Andrea and Tom DelRosso	Jane and Ruel Miller
Bob Demers	Barbara Nardello
Marie and Matt Nierenberg	Marie and Matt Nierenberg
Emily Douyard	Stuart Palmer
Barbara Fosket	Tina and Gabriel Patterson
Alan Foscett	Rob Reihl
Sheila Foscett	Carol Ricker
Janet B Haller	Jonah Schaefer and Turbo
Samantha Hewston	Joanie Stapkoski
	Karen Turner

**Cheshire Grange Community Fair
is supported by:**

Association of Connecticut Fairs

CTAgFairs.org

DEPT. A – NEEDLEWORK & SEWING

SUPTS: JANE MILLER – Phone: (203) 272-8255

1. Only new, clean articles will be accepted.
2. All lots will be divided as deemed necessary.
3. All entries, except Antique Quilts, must be the handiwork of the Exhibitor.

**ALL EXHIBITS MUST BE BROUGHT TO
FAIRGROUNDS BETWEEN 6:00 P.M. AND 9:00 P.M.
FRI. AUGUST 22nd.**

Needlework Prizes for each Category

1st Place \$2.50 plus Blue Ribbon

2nd Place \$2.00 plus Red Ribbon

3rd Place \$1.00 plus White Ribbon

Best of Show Rosette will be given.

- A01 Any Crewel Item
A02 Afghan – Knit or Crochet
A03 Any Other Crocheted Item
A04 Any Embroidered Item
A05 Counted Cross Stitch (Framed)
A06 Any Other Counted Cross Stitch
A07 Adult Garment – Knit or Crochet
A08 Any Other Knit Item
A09 3 Piece Baby Set – Knit or Crochet
A10 Plastic Canvas
A11 Any Needlepoint
A12 Any Rug
A13 Any Hooked Item
A14 Any Other Worthy Item

Sewing Prizes for each Category

1st Place \$2.00 plus Blue Ribbon

2nd Place \$1.50 plus Red Ribbon

3rd Place \$1.00 plus White Ribbon

Best of Show Rosette will be given.

- A15 Dress or Jumper
A16 Skirt
A17 Blouse or Shirt
A18 Stuffed Toy
A19 Pillow
A20 Any Other Worthy Item

Quilt Prizes for each Category

1st Place \$4.00 plus Blue-Ribbon

2nd Place \$3.00 plus Red Ribbon

3rd Place \$2.00 plus White Ribbon

Best of Show Rosette will be given.

- A21 Antique
A22 Hand Quilted Applique
A23 Hand Quilted Patchwork
A24 Tied Patchwork
A25 Machine Quilted Patchwork
A26 Childs Quilt
A27 Quilted Wall Hanging
A28 Miscellaneous Quilted Items

DEPT B – BAKING & CANNING

SUPT: DIANE CALABRO – Phone: (203)641-6631

All home baked goods become the property of the Fair. Baking will go on sale at 3:00 p.m., Sunday. Baking is judged on appearance, flavor & texture.

The Cheshire Fair Association will pay for the winning Adult and Apple Pie contestant's dinner at the Fall Meeting of the Fair Association.

**ALL EXHIBITS MUST BE BROUGHT TO HALL
BETWEEN 6:00 P.M. AND 8:45 P.M. FRI. AUGUST
22nd. BAKED GOOD ENTRIES MUST BE HOME-
MADE – NO STORE-BOUGHT MIXES.**

Baking Prizes for Lots 1, 2, & 3....

- 1st Place \$5.00 plus Blue-Ribbon
- 2nd Place \$4.00 plus Red Ribbon
- 3rd Place \$3.00 plus White Ribbon

B01.....Apple Pie Contest (See pp 15 for Contest)
B02...State Baking Contest (See pp 11 for Contests)

Baking Prizes for all other Baking Categories

- 1st Place \$3.00 plus Blue Ribbon
- 2nd Place \$2.00 plus Red Ribbon
- 3rd Place \$1.00 plus White Ribbon
- Best of Show Rosette will be given for Best Baked Item

B03.....Any Other Pie
B04.....Yeast Bread or Rolls
B05.....Quick Bread
B06.....Coffee Cake or Ring
B07.....Any Cake
B08.....Cupcakes (5)
B09.....Any Gluten-Free Bread
B10.....Any Gluten-Free Muffins or Rolls (7)
B11.....Any Gluten-Free Cookies or Bars (7)
B12.....Oatmeal Cookies (7)
B13.....Chocolate or Other Chip Cookies (7)
B14.....Peanut Butter Cookies (7)
B15.....Other Cookies (7)
B16.....Brownies (7)
B17.....Fudge (8)
B18.....Any Other Worthy Item

Canning Prizes - 1 Jar for each Category

- 1st Place \$2.00 plus Blue-Ribbon
- 2nd Place \$1.50 plus Red Ribbon
- 3rd Place \$1.00 plus White Ribbon

"Best of Show" Rosette will be given for BEST Canning Item All canned goods must be homemade. Pick up canned items after 4.

B19.....Any Vegetable
B20.....Any Fruit
B21.....Any Jelly
B22.....Any Jam
B23.....Pickles
B24.....Relish
B25.....Any Other Worthy Item

Canning Collection Prizes—Prizes for each Category

- 1st Place \$4.00 plus Blue-Ribbon
- 2nd Place \$3.00 plus Red Ribbon
- 3rd Place \$2.00 plus White Ribbon

"Best of Show" Rosette will be Given

Canning Collection shall consist of four jars – each a different variety. May be displayed in decorated baskets or containers which are unique year to year. The product must be visible. Pick up collection items after 4 p.m. on Sunday.

B26.....Jelly Collection
B27.....Jam Collection
B28.....Pickle Collection
B29.....Relish Collection

DEPT. C – ART, CRAFTS & COLLECTIONS

SUPT: EMILY DOUYARD

Phone: (203) 707-4252

**ALL EXHIBITS MUST BE BROUGHT TO FAIR-
GROUNDS BETWEEN 6:00 P.M. AND 9:00 P.M. FRI.
AUGUST 22nd.**

Art Prizes for each Category

- 1st Place \$4.00 plus Blue-Ribbon
- 2nd Place \$3.00 plus Red Ribbon
- 3rd Place \$2.00 plus White Ribbon
- Best of Show Rosette will be given.

- *No entries of Number Paintings will be accepted.*
- *All Paintings are to be wired for hanging.*

C01Oil Paintings
C02Acrylics
C03Watercolors
C04Pastels
C05Sculpture
C06Pen & Ink
C07Pencil and/ or Charcoal
C08Unlisted Media

Craft & Collection Prizes for each Category

- 1st Place \$3.00 plus Blue Ribbon
- 2nd Place \$2.00 plus Red Ribbon
- 3rd Place \$1.00 plus White Ribbon
- Best of Show Rosette will be given for Best Craft & Best Collection.

Crafts - Lots will be divided as deemed necessary.

C09Ceramics
C10Jewelry
C11Christmas Decorations
C12Nature Crafted Article
C13Dried Flower Arrangement
C14Woodworking
C15Basket Weaving

[Dept C – ARTS & CRAFTS continued]

C16	Beadwork
C17	String or Wire Art
C18	Collage
C19	Doll Clothes
C20	Handmade Dolls
C21	Lap Weaving
C22	Any Other Item

Collections -

- Only one entry per exhibitor in each lot.
- Size Limit - 2 feet by 2 feet - each collection

C23	Glassware
C24	Animal Statuary
C25	Antique Tools
C26	Rocks and Minerals
C27	Salt & Pepper Shakers
C28	Memorabilia
C29	Agriculture
C30	Miscellaneous

DEPT D - PHOTOGRAPHY

SUPT: JONAH SCHAEFFER Phone: (515) 306-9402

INSTRUCTIONS FOR SUBMITTING PHOTOGRAPHS

PHOTOGRAPHS are sent or delivered to Jonah Schaeffer, 1731 Peck Lane, Cheshire, CT 06410 – To be received no later than 6 PM, Tuesday, August 19th.

Entry Blank is sent separately to C. Dimmick, 60 Broadview Rd., Cheshire, CT 06410.

1. All photos must be original and taken by the photographer who enters them.
2. *The Exhibiter's name, address, and lot number must be printed on the back of each print.*
3. A maximum of three (3) entries in any one lot is permitted from each exhibitor. EACH PHOTO MUST BE LISTED SEPARATELY ON THE ENTRY BLANK.
4. All **Prints 5x7 or larger** (Lots D01 – D07) require backing or mounting.
5. All **Color Snapshots** (Lots D08 – D15) will be no larger than 4" x 6" and unmounted.
6. It will be appreciated if the location of the photo is indicated – a note on the back of entry is satisfactory.

Prints – 5X7 & Larger - Prizes for each Category

1st Place \$4.00 plus Blue Ribbon
2nd Place \$3.00 plus Red Ribbon
3rd Place \$2.00 plus White Ribbon
Best of Show Rosette given

PRINTS – 5"X7" AND LARGER

D01	Farming & Agriculture
D02	People
D03	Animals
D04	The Light of Day
D05	Above Me
D06	Around Town
D07	Miscellaneous

Color Snapshot Prizes for each Category

1st Place \$3.00 plus Blue Ribbon
2nd Place \$2.00 plus Red Ribbon
3rd Place \$1.00 plus White Ribbon
Best of Show Rosette given.

COLOR SNAPSHOTS

D08	Candid's of People
D09	Animals
D10	My Favorite Food
D11	Landscape
D12	By the Sea
D13	Patriotism
D14	Grangers at Work
D15	Computer Enhanced

DEPT E – FLOWERS

SUPT: CHARLES DIMMICK – PHONE: (203) 272-6072
CDIMMICK@SNET.NET

ALL EXHIBITS MUST BE BROUGHT TO THE FAIRGROUNDS BETWEEN 6:00 P.M. AND 9:00 P.M. FRI. AUGUST 22nd.

- Entries in Lots #1 through #10 become the property of the Fair
- Flowers in Lots #13 through #19 become the property of the Fair, however, containers will be returned.
- Lots will be divided as deemed necessary.

Prizes for Lots 1 through 12

1st Place \$2.00 plus Blue-Ribbon
2nd Place \$1.50 plus Red Ribbon
3rd Place \$1.00 plus White Ribbon
Best of Show Rosette will be given in each category.

THREE STEMS OF EACH:

E01	Asters
E02	Ageratum
E03	Dahlia
E04	Marigolds
E05	Roses
E06	Salvia
E07	Strawflowers
E08	Zinnias
E09	Other Garden Flowers
E10	Best Single Blossom

HOUSEPLANTS:

E11	Flowering
E12	Foliage

Prizes for Lots 13 through 21

1st Place \$3.00 plus Blue-Ribbon
2nd Place \$2.00 plus Red Ribbon
3rd Place \$1.00 plus White Ribbon
Best of Show Rosette awarded for the best arrangement.

[Dept E – FLOWERS continued]

ARRANGEMENTS:

- E13.....Red, White & Blue
E14.....In Unusual Container
E15.....Wildflowers
E16.....All White
E17.....Coffee Table
E18.....Most Unusual
E19.....Mini (Under 4 in.)

SPECIAL CLASSES:

- E20.....Largest Sunflower
E21.....Tallest Sunflower

DEPT F – FRUIT, VEGETABLES & EGGS

SUPT: CHARLES DIMMICK - PHONE: (203) 272-6072

CDIMMICK@SNET.NET

**ALL EXHIBITS MUST BE BROUGHT TO
FAIRGROUNDS BETWEEN 6:00 P.M. AND 9:00 P.M.
FRI. AUGUST 22nd.**

- All entries become the property of the fair unless prior arrangements have been made.
- All entries must come on a paper plate.
- Lots will be divided as deemed necessary.

Prizes for each Category in lots 1 through 26

- 1st Place \$3.00 plus Blue Ribbon
2nd Place \$2.00 plus Red Ribbon
3rd Place \$1.00 plus White Ribbon

Best of Show Rosette will be given for this department.

- F01.....Any Fruit, 3 on a Plate
F02.....Any Berries, 1 cup
F03.....Grapes, 1 Bunch
F04.....Beans, (12)
F05.....Beets, (5)
F06.....Broccoli, 1 bunch
F07.....Carrots, (5)
F08.....Cauliflower, 1 head
F09.....Sweet Corn, 6 ears
F10.....Tallest Corn Stalk
F11.....Cucumbers
F12.....Eggplant, 1 specimen
F13.....Gourds, 5 (unglazed)
F14.....Herbs, (3) different kinds
F15.....Onions, (5)
F16.....Peppers, (5)
F17.....Potatoes, (5)
F18.....Sugar Pumpkin
F19.....Other Pumpkins
F20.....Largest Pumpkins
F21.....Radishes
F22.....Spinach, 10 leaves
F23.....Squash
F24.....Largest Zucchini
F25.....Tomatoes, (5)
F26.....Any Other Vegetable

Prizes for Lot 27:

- 1st Place \$10.00 plus Blue-Ribbon
2nd Place \$8.00 plus Red Ribbon
3rd Place \$6.00 plus White Ribbon

F27.....Vegetable Collection
(must contain at least 10 different kinds of vegetables and
at least 30 specimens)

Prizes for Lot 28:

- 1st Place \$5.00 plus Blue Ribbon
2nd Place \$3.00 plus Red Ribbon
3rd Place \$2.00 plus White Ribbon

F28.....Any Dozen Eggs (all one color)

DEPT Y - YOUTH

SUPT: BARBARA FOSKETT – PHONE: 203 272-8180

Committee: Maryalyce Lee

**ALL EXHIBITS MUST BE BROUGHT TO
FAIRGROUNDS BETWEEN 6:00 P.M. AND 9:00 P.M.
FRI. AUGUST 22nd.**

- Open to all Youth 14 years old and under.
- Entry Blank must be received by the Fair Secretary no later than Monday, August 21st.
- Entry fee for Youth Exhibitors entering in Department Y only is **25 cents**. This fee allows you to enter all lots in this Department. *Anyone entering Department Y plus one or more of the Adult Departments must pay the \$1.00 Adult Fee in place of the Youth Fee.*
- Articles exhibited in this Department will be judged by the Danish System except for the Junior Baking Contest, which will be judged according to the Rules of the Association of Connecticut Fairs, the largest sunflower, the tallest sunflower, and the largest pumpkin. Using the Danish System means items will be judged on the quality of work taking into consideration the age of the exhibitor and how complex the item is. Items will not be judged one against the other.
- No Mixes shall be used for baked goods.
- All baked goods and vegetables will be auctioned off.
- Youth Premiums will be paid at 4:00 p.m. Sunday.

Prizes for Lots 1 through 7 and 9 through 33:

- 1st Place \$1.00 plus Blue Ribbon
2nd Place \$.75 plus Red Ribbon
3rd Place \$.50 plus White Ribbon

Prizes for Lots 8, & 33:

- 1st Place \$3.00 plus Blue-Ribbon
2nd Place \$2.50 plus Red Ribbon
3rd Place \$2.00 plus White Ribbon

FLOWERS

- Y01Any Cut Flower (3 stems)
Y02Miniature Arrangement
(not over 4" including container)
Y03Arrangement of Wildflowers

[DEPT Y - YOUTH continued]

FRUITS AND VEGETABLES

- Y04 Any Fruit on a Plate
Y05 Any Vegetable on a Plate
Y06 Pumpkin, 1 specimen
Y07 Pumpkin, Decorated (not carved)

BAKING AND CANNING

- Y08 ..**Junior Baking Contest (see pp 14 for contest)**
*(paid for by Cheshire Grange Community Fair at
Fall Meeting of Association of CT Fairs)*

- Y09 Bread or Rolls
Y10 Cake or Cupcakes (No Mixes)
Y11 Pie
Y12 Brownies, 7 on plate
Y13 Cookies, 7 on plate
Y14 Muffins, 7 on plate
Y15 Candy, 7 pieces on plate

NEEDLEWORK

- Y16 Cross Stitch
Y17 Wall Hanging
Y18 Any Hand Sewn Item
Y19 Any Machine Sewn Item
Y20 Any Other Needlework

ART AND CRAFTS

- Y21 Watercolor
Y22 Magic Marker
Y23 Craypas
Y24 Pastels/Chalk Drawing
Y25 Pencil/Color Pencil Sketching
Y26 Any Other Artwork
Y27 Crayon Drawing
Y28 Ceramics
Y29 Models
Y30 Lego Crafts
Y31 Any Other Craft
Y32 Color Snapshots
Y33 Essays (any subject)

Prizes for Demonstrations:

- 1st Place \$6.00 plus Blue-Ribbon
2nd Place \$4.00 plus Red Ribbon
3rd Place \$3.00 plus White Ribbon

- Y34 Any Demonstration
*(you must note on Entry Blank the type
Demonstration you are giving)*

Prizes Collections:

- 1st Place \$3.00 plus Blue-Ribbon
2nd Place \$2.00 plus Red Ribbon
3rd Place \$1.00 plus White Ribbon

- Size Limit - No larger than 11x20 inches

- Y35 Any Collection
*(Please specify on Entry Blank the type of
Collection you have)*

THE GRANGE - an Agricultural Family Fraternity Is An Organization For You

PURPOSE: To build a program of fellowship service and member activities within framework of fraternalism embracing all members through: Business Meetings - Legislative Activities - Charitable Services - Deaf Awareness - Youth Projects - Women's Activities - Community Service - Junior Grange.

AMERICA'S FIRST conceived in 1867 as an organization of agriculture people, the Grange has grown into an organization concerned about the needs of all people, rural and suburban.

A FAMILY ORGANIZATION Father, mother, young adults and children meet on common level of understanding to participate in educational and recreational programs.

A LEGISLATIVE VOICE Provides each member with a voice - an opportunity starting in the local unit, to express his beliefs, knowing that his ideas may reach the highest levels of Grange and the Government. Although nonpartisan, the Grange stresses participation in activities related to public issues.

A FRATERNAL ORGANIZATION Every Grange opens in regular form with a prayer and the salute to the flag. The local (Subordinate) Grange confers the first four degrees, symbolic of the seasons of the year, upon the new member when he or she joins the Grange. The county (Pomona) Grange confers the Fifth Degree, the State Grange the sixth and the National Grange the Seventh Degree. Throughout the Grange, signs, symbols and passwords are used to represent the lessons of life and agriculture.

A COMMUNITY ORGANIZATION The Subordinate Grange, built around the community, elects its own officers and runs its own program. Although Grange business is conducted in closed meetings, educational and informational programs are frequently open to the public. Each member has one vote. The Subordinate Granges meet once or twice a month. Yearly dues, which vary with Granges, are used to support Subordinate, State and National Grange.

MEMBERSHIP REQUIREMENTS Persons 14 years of age and older may join Subordinate Grange. Each applicant must have a desire to work with others in elevating and advancing the interest of Agriculture and Rural Life and to receive the benefits and advantages of Grange membership.

For more information on the Grange or on how to join, contact the President of Cheshire Grange at (203) 272-8255 or the Connecticut State Grange, 100 Newfield Road, P.O. Box 3 Winchester Center, CT 06094.

For general inquiries and information requests
secretary@ctstategrange.org

Association of CT Fairs State Contests

2025 Baking Contests Rules

Each year The Association of Connecticut Fairs sponsors baking contests open to the public at participating member fairs. There are separate contests for Junior and Adult divisions, each with a specific recipe. A Two-Crusted Apple Pie Baking contest is also held.

WHO MAY ENTER: The contest at each participating member fair is open to all men, women and juniors. Commercial, industrial or professional bakers are not eligible. Divisions: Juniors (ages 7 to 15 as of July 1st) and Adult.

HOW TO ENTER: All men, women or juniors entering a contest at any participating member fair is automatically entered and competing in the local contest. Contestants may enter the contest at as many fairs as they wish until they win first prize. They will then represent that fair at the state baking contest. Please submit entries to both the local and state contest on disposable plates. The Association of Connecticut Fairs and the member fairs are not responsible for the return of plates, trays or containers.

JUDGING: Judging will be based on appearance, flavor and texture. The Association of Connecticut Fairs will furnish judges' score sheets to each fair and the contestant will receive these sheets at the end of the contest. Additions, deletions or substitutions in the recipe are not permitted and will result in disqualification. All decisions of the judges are final.

LOCAL CONTEST: The winner of the local contest will receive a blue ribbon from the Association of Connecticut Fairs and will then become eligible to submit their entry at the state contest. In the event that only one entry is received at the local contest and that entry is worthy of first prize, that entry must be awarded the first place ribbon.

STATE CONTEST: The state contest is held as part of the Fall Meeting and Convention of the Association of Connecticut Fairs. Entries for the state contest are accepted from **8:00 am to 10:00 a.m.** on the day of the judging (contact your local fair or visit www.ctagfairs.org for the date and location). Contest winners are announced at the Fall Meeting. Each fair is responsible for contacting their contest winner and providing them with information. The Association of Connecticut Fairs does not contact individual fairs or contest winners in regards to contest and banquet reservations nor does the Association of Connecticut Fairs cover the costs of attending the awards banquet. **NO BANQUET RESERVATIONS FOR CONTEST WINNERS WILL BE ACCEPTED AT THE DOOR.**

Association of Connecticut Fairs – Baking Committee - 2025

Laurie M Skornia – Chairman

136 View St
Torrington, CT 06790
lskornia@optimum.net
203-464-0933

Kristy Faulkner, 73 New England Rd, Guilford, CT 06437
kristybale@msn.com
203-823-0261

Valerie Ferrucci, 1595 Little Meadow Rd, Guilford, CT 06437
vferrucci@ffmechanical.com

Jean Hardy, 230 Russo Drive, Hamden, CT 06518
203-287-9570
JMH100450@aol.com

Fred Mauzey, 83 Union St, Guilford, CT 06437
fmauzey@hotmail.com
203-453-3251

Diane Richard, 518 West St, Guilford, CT 06437
dianerich@snet.net
203-457-1168

Frank Skornia, 328 Ely Ave #1, Norwalk, CT 06854
fskornia@gmail.com 203-231-6992

Donna Veach, 1218 High Road, Kensington, CT 06037
dmveach@comcast.net 860-604-0462

Kathy-Leigh Russo
580 West Street, Guilford, CT 06437
Kathy-Leigh@comcast.com
203-457-0641

Bob Russo
580 West Street, Guilford, CT 06437

Pete Stone spete958@gmail.com

Tony Stone ast2052silver@gmail.com

Valerie Ferrucci
1595 Little Meadow Rd, Guilford, CT 06437
vferrucci@ffmechanical.com

Junior Member – Willow Baker

Association of Connecticut Fairs, Inc.

Adult Baking Contest – 2025

Swedish Cardamom Bread

Ingredients

- ¼ cup butter
- 1 cup milk
- ½ cup white sugar, granulated
- 2 ¼ teaspoons or one packet of active dry yeast
- 3 ½ cups King Arthur Baking All-Purpose flour
- ½ teaspoon salt
- 1 ¼ teaspoon ground cardamom
- ½ tablespoon orange zest
- 1 egg beaten (reserve 2 teaspoons egg for egg-wash)
- 2 teaspoons milk
- 1-2 tablespoon Swedish Pearl sugar



Instructions:

Melt the butter in a microwave safe container that holds at least 2 cups. Add the milk and sugar, then heat to about 110F. Stir in the yeast.

In a large mixing bowl, mix the flour, salt and cardamom.

In a small bowl, beat the egg, then remove about 2 teaspoons into a separate container. Mix this smaller portion of egg with 2 teaspoons milk to make an egg wash, then refrigerate until needed.

Mix the larger portion of egg, and the orange zest into the milk mixture. Then add to the flour mixture. Beat with a dough hook or knead with your hands until the dough is smooth and elastic. Add additional flour or milk if needed to create a nice dough.

Cover the bowl of dough with a damp dish cloth and let rise in a warm place until doubled about 1 – 1 ½ hours.

When doubled in size, knead a few times, then divide the dough into thirds and make 3 15-inch long rolls of dough. On a parchment lined baking sheet, braid these together then tuck in the ends. Preheat the oven to 375 F degrees.

Let rise in a warm place until almost double, about 40 minutes. Take the reserved egg wash out of the refrigerator, then whisk briefly. Using a soft brush, brush egg wash lightly over the top and sides of the bread, then sprinkle with Swedish Pearl sugar.

Bake at 375 F. degrees for about 20-30 minutes until the loaf is golden brown and sounds hollow when tapped. Submit on a foil-covered cardboard no larger than one inch from the sides of the bread.

Judging Criteria

Overall appearance	25 points
Following Directions	10 points
Texture	15 points
Aroma	10 points
Flavor	<u>40 points</u>
TOTAL	100 points

The following prizes and a rosette will be awarded at the annual state contest held in November 2022.

1st Place:	\$40.00	5th Place:	\$15.00	9th Place:	\$5.00
2nd Place:	\$35.00	6th Place:	\$12.50	10th Place:	\$5.00
3rd Place:	\$30.00	7th Place:	\$10.00		
4th Place:	\$25.00	8th Place:	\$7.50		

Honorable Mention Ribbons will also be awarded.

King Arthur Flour is sponsoring ribbons and prizes at the Annual State Contest held in November.

Association of Connecticut Fairs, Inc.

Junior Baking Contest – 2025 Swedish Thumbprint Cookies

Ingredients:

½ cup butter, softened
¼ cup granulated sugar
1 teaspoon vanilla extract
1 cup King Arthur Baking All-Purpose flour, sifted
¼ cup seedless raspberry jam



Directions:

Preheat the oven to 350 F.

In a large bowl, mix the butter and sugar until fluffy. Mix in the vanilla extract, then add the sifted flour, and mix until a shaggy dough forms. Knead the dough with your hands until the dough comes together and becomes smooth.

Scooping a tablespoonful of dough out at a time, shape into small balls, and place onto cookie sheet(s). This will make 12 cookies. Use the back of a round ¼ teaspoon or your thumb to make an indentation in the center of each cookie ball.

Chill in the refrigerator for one hour.

Fill each indentation with raspberry jam, making sure not to overfill.

Bake the cookies in the preheated oven for 12 to 15 minutes, until the cookies are light, golden brown. Remove from the oven and let them cool for 10 minutes on cookie sheet(s) and then transfer to a rack to completely cool.

Submit 6 cookies on a white 9” paper plate.

Judging Criteria

Overall Appearance	25 points
Following Directions	10 points
Texture	15points
Aroma	10 points
Flavor	<u>40 points</u>
TOTAL	100 points

The following prizes plus a Rosette will be awarded at the Annual State Contest held in November 2022. Honorable Mention Ribbons will also be awarded.

**1st Place \$20.00
4th Place \$7.50
7th Place \$5.00
10th Place \$2.50**

**2nd Place \$15.00
5th Place \$5.00
8th Place \$5.00**

**3rd Place \$10.00
6th Place \$5.00
9th Place \$2.50**

King Arthur Flour is sponsoring ribbons and prizes at the Annual State Contest held in November.



Association of Connecticut Fairs 2025 Two-Crusted Apple Pie Contest



Contest Rules

1. Each pie must be a 9" (measured at the top inside edge of the dish) Two-Crusted Pie, lattice-top is excluded
2. Include the recipe with your name and address. Recipe is for judging only.
3. No pre-made or pie mixes will be allowed.
4. The main ingredient must be apples. However, pies may include other fruits or ingredients.
5. Failure to adhere to these rules will **disqualify** the entered pie from the competition.
6. All pies become the property of the Association of Connecticut Fairs (baking dishes will not be returned).

Judging Criteria

Overall Appearance.....	40 points
Crust.....	10 points
Flavor	40 points
Texture	<u>10 points</u>
TOTAL	100 points

The following prizes plus a rosette will be awarded at the annual state contest held in October/November. Honorable Mention Ribbons will also be awarded.

1st Place: \$40.00	5th Place: \$15.00	9th Place: \$5.00
2nd Place: \$35.00	6th Place: \$12.50	10th Place: \$5.00
3rd Place: \$30.00	7th Place: \$10.00	
4th Place: \$25.00	8th Place: \$7.50	

Bishops Orchards is sponsoring by awarding bags of apples at the Annual State Contest held in November.

King Arthur Flour is sponsoring ribbons and prizes at the Annual State Contest held in November.





203-269-9495

Yalesville Lawn & Garden Power Equipment

571 Church Street
Wallingford, CT 06492





LIBERTY BANK

Be Community Kind.™



**SERVING SPECIALTY ARABICA COFFEES, ESPRESSO
BEVERAGES, TEAS, SMOOTHIES, CHAI LATTES,
PASTRIES, & SANDWICHES**

Cheshire, CT • Waterbury, CT
www.cheshirecoffee.com





PLEASE
CONTACT...

MEGAN JEFFERY
203-895-7220
megillustrations@gmail.com
IG:megan.jeffery

... TO LEARN ABOUT THESE OFFERINGS & MORE ...

- **PAINT-ALONG-WITH-ME** FOR KIDS' PARTIES !!
- **CRAFTING WORKSHOPS** FOR YOUR ORGANIZATION !!
- **PROFESSIONAL DEVELOPMENTS** FOR ART EDUCATORS !!

RESUME & REFERENCES ARE AVAILABLE UPON REQUEST.

Cheshire Grange Community Fair's
Teacup Auction

A GIFT BASKET RAFFLE

- Each basket minimum \$15 value -

All types of theme baskets

Several baskets include \$25 or greater GIFT CARDS
Home-Depot, Lowe's, ACE Hardware
Wal-Mart, Petco & Evan's Toy Shoppe



**Breads
Cakes
Pies**



SALES TABLE

Come To the Best Bake Sale in Town
At the Cheshire Grange Fair



**Cookies Brownies
Vegetables Jams
Plants & Flowers**





***R.W. Hine
Ace Hardware***

***231 Maple Avenue
Cheshire, Connecticut
(203) 272-4463***

RWHineHardware.com



New Home Builders

Our land or yours.
Call for quote and references.

203-250-1400

Al Joy Tire Service

***B.F. GOODRICH • COOPER • MICHELIN TIRES
COMPUTERIZED HIGH SPEED WHEEL BALANCING***

GET OUR PRICES BEFORE YOU BUY

(860) 628-2728

466 Main Street, Southington, CT

"Entered according to Act of Congress in the year 1873 by Strobridge & Co. in the Office of the Librarian of Congress at Washington"

This Entry Blank must be completed by the Exhibitor

60 Broadview Road, Cheshire, CT 06410

Entry Fee Enclosed \$ _____

TOWN _____ STATE _____ ZIP _____

[illegible]

Additional Entry Forms are available for download at: www.cheshiregrange.org/grangeagfair.asp

CHESHIRE GRANGE COMMUNITY FAIR YOUTH DEPARTMENT
ENTRY BLANK 2025

This Entry Blank must be completed by the Exhibitor

Send to: Charles Dimmick

60 Broadview Road, Cheshire, CT 06410

All entries must be received by Monday, August 18, 2025

Entry Fee Enclosed \$ _____ Birthday (mm/dd/yyyy) _____

NAME	PHONE
------	-------

ADDRESS

TOWN STATE ZIP

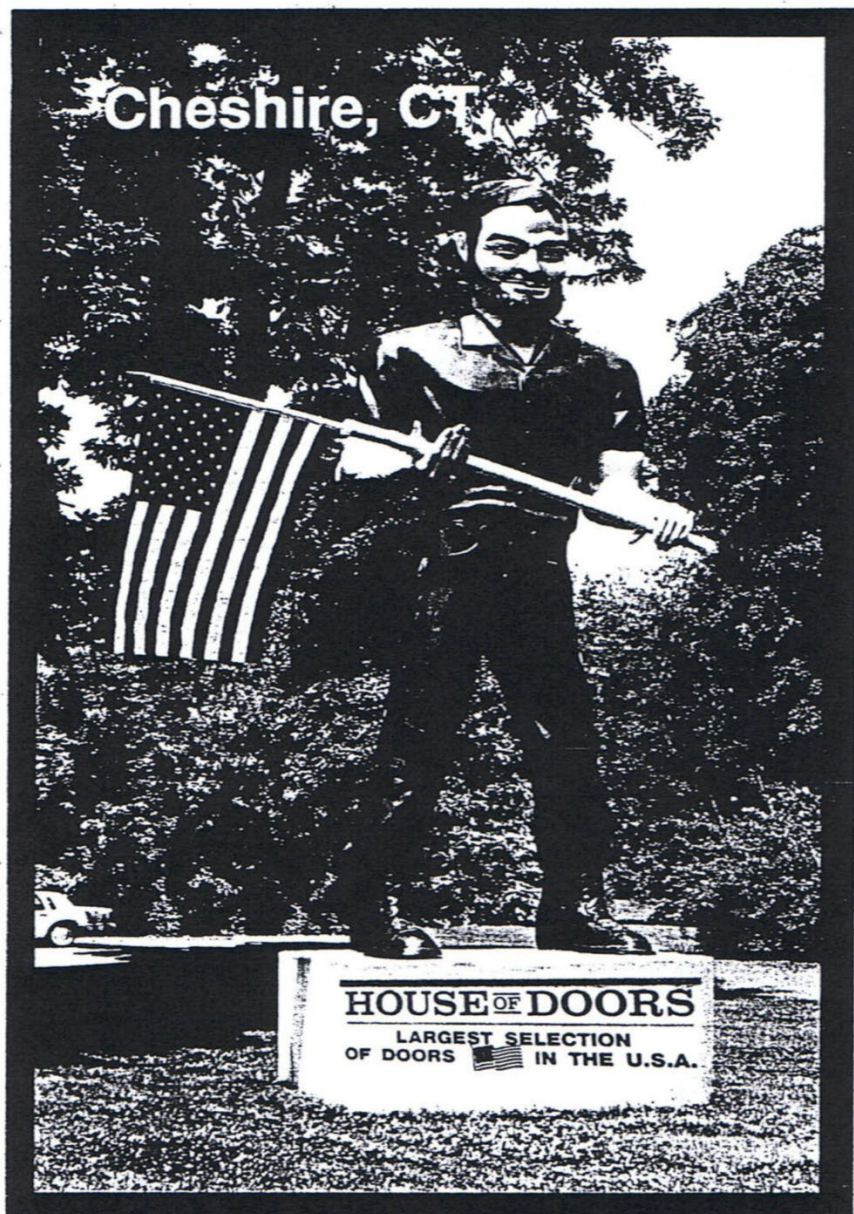
[illegible]

Additional Entry Forms are available for download at: www.cheshiregrange.org/grangeagfair.asp

540 W. JOHNSON AVE.
CHESHIRE, CT. 06410
TEL 271-DOOR
203-271-3667

195 E. HADDAM TPK. (RTE. 82)
SALEM, CT. 06415
TEL 859-DOOR
860-859-3667

HOUSE OF DOORS, INC.



B&S sheetmetal company, inc.

SALES INSTALLATION SERVICE MAINTENANCE
HEATING & COOLING CONTRACTOR FOR ALL OF CT
(203) 272-0653



1317 South Main Street, Route 10
Cheshire, CT 06410

Compliments of



**Dietrich
Gardens**
LLC

OWNERS:

Dan D. Dietrich
Kim L. Dietrich
Mark D. Dietrich
Ann L. Sawyer

1818 Highland Avenue
Cheshire, CT 06410
(203) 271-0690



Ye Old Station Auto Body, Inc.

Servicing Cheshire & Surrounding Communities Since 1960

John Mazzella, Owner

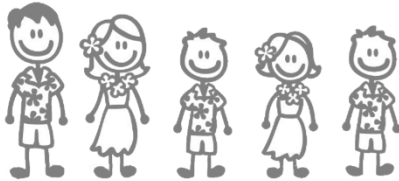
203-272-7266 p

John@yeoldstation.com

203-671-0122 cell

1322 Waterbury Road

COMPLIMENTS OF THE MARSHALL CLAN



Lu, Kent,
Tina, Jim, Gabriel
Marie, Matt, Ezra, Caleb



Marty McFly the Dog, Jac Sparrow the Dog



Jax the Dog, Oppie the Dog
&



In Loving Memory



Candy the Dog & Shanty the Dog



Have a Great Day at the Fair!

We meet on the 3rd Thursday
of the month at 1:00 p.m.
at the Cheshire Senior Center

***Join us!
Guests & New Members are Welcome!***



CHESHIRE HISTORICAL SOCIETY

KEEPING HISTORY ALIVE

The Cheshire Historical Society congratulates the Cheshire Grange on its 140th Community Fair!

We are proud to support an organization that is living history and an integral part of the community!

43 Church Drive

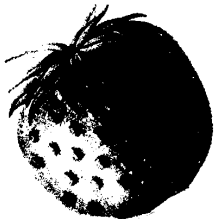
Phone: 203-272-2574

cheshirehistorical@gmail.com

cheshirehistory.org

www.facebook.com/CheshireHistoricalSociety/

www.instagram.com/cheshirehistory/



**Compliments of
Emily Douyard
Jonah Schaeffer
And Turbo**



Have Fun at the Fair!



COMPLIMENTS OF

**KURTZ
FARMS**

TOWER FARMS

- *ANNUALS
- *HANGING BASKETS
- *GERANIUMS
- *PERENNIALS
- *NURSERY STOCK
- *GARDEN MUMS

Growers of Quality Plants

JONATHAN MANKE

1338 HIGHLAND AVE. 272-5952

M&T Bank

Understanding what's important®

Kathy Larkin, VP
286 Maple Ave
Cheshire Branch
203 718 9868 #3



Equal Housing Lender. ©2023 MGT Bank. Member FDIC. [mtb.com](https://www.mtb.com)

***Compliments of
Caribou Graphics***

*For Cheshire Grange's
140th Community Fair*





218 Maple Avenue, Cheshire

Ion Bank takes great pride in helping to make this community a great place to live and work.



IonBank.com • 203.729.4442

**We are proud to support
Cheshire Grange.**

Member FDIC



CARMODY'S FARM

**SENDS OUR BEST WISHES
FOR ANOTHER SUCCESSFUL
CHESHIRE GRANGE FAIR**



**Farmer John says
ENJOY THE FAIR**

**And then come to our Farm
We're OPEN until 7 PM every day**

1735 Peck Lane • (860) 982-1215

We'll be open until mid-December



The Calabro Family
hope you have a great time
at the
CHESHIRE GRANGE FAIR

Dave & Diane
Domani Dog & Reyna Dog

TUXIS

OHR'S FUEL INC.

FREE

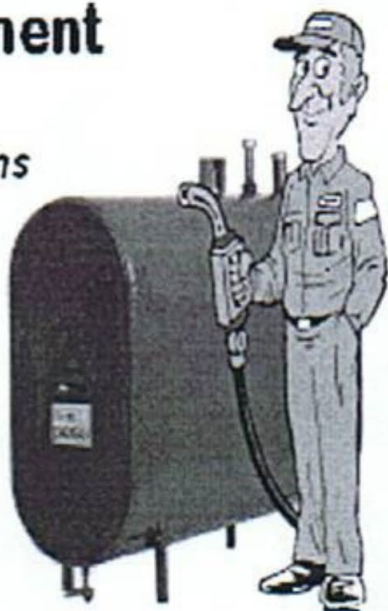
Ultrasonic Tank Testing

Ultrasonic tank test verifies the integrity of the vessel by measuring the wall density of the steel & provides a read out of areas that are thinning.

**Financing
Available!!**

Heating Equipment

- *Oil & Gas Installations*
- *Service Contracts*
- *24 hour Service*
- *Pricing Programs*
- *Budget plans*



Call Today! 203-639-3513

Lic. #130

80 Britannia St., Meriden, CT 06450

REMEMBER!
ADMISSION TO OUR FAIR IS FREE

To Phone Hall During Fair
Call (203) 537-5213

Need to cool off? ———
Enter the Water Balloon —
Contest at 1:30 on Saturday



Compliments of

The Dimmick Family

Charles
Wes Dymoke

Alderson Ford

FUNERAL HOMES, INC.

Waterbury • Naugatuck • Cheshire

www.fordfh.com

1-844-4-FORDFH

(1-844-436-7334)



Providing Professional and Caring Service since 1922



N Casertano

GREENHOUSES & FARMS, INC.
1030 SOUTH MERIDEN ROAD
CHESHIRE, CT 06410

(203) 272-6444
(203) 272-4563
FAX (203) 271-0496

the SALLY BOWMAN team



Cheryl Rosadino, Katie Smith, Sally Bowman

"Opening doors to new homes, one house at a time."

203-272-5232

thesallybowmanteam@bhhsne.com

**BERKSHIRE
HATHAWAY**
HOMESERVICES

NEW ENGLAND
PROPERTIES



(203) 272-1825
LOCAL CALL

CT WATS
1-800-246-1260

George H. Davidson



Truck Parts, Inc.
128 Blacks Road, Cheshire

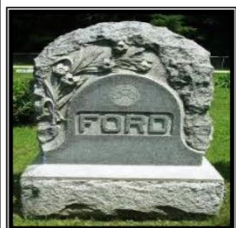
Medium - Heavy Duty
Off Hwy & Agricultural Applications

Specializing In:

- *Custom Made Hydraulic Hoses
Made to Order While You Wait
- *Brake and Wheel Parts

Congratulations to the Cheshire Grange On Your 140th Annual Community Fair

Compliments of:



J.W. FORD & ASSOCIATES~Monument Services, L.L.C.

Monuments ▪ Markers ▪ Cemetery Lettering

Cleaning and Restoration • Cremation Memorials

Post Office Box 21 ▪ Naugatuck, Connecticut 06770-0021

Cell:203-808-2774 • Office Facsimile: 203-729-2979 • Residence Facsimile:203-729-6326

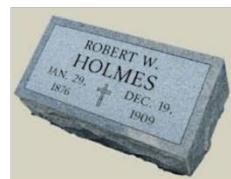
Email: fordmonument@gmail.com

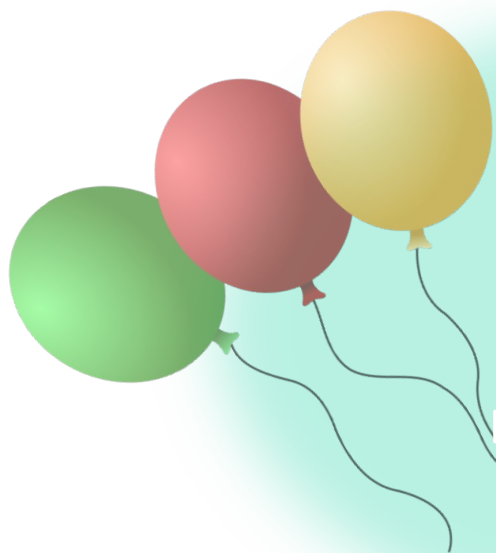
- No Additional Charge For Custom Or Duplicate Design Work
- Detail Proof Provided Prior To Construction
- In Home Appointments, Nights and Weekends

.....

Quality Memorials in Granite and Bronze

Over Forty Years of Service in the Greater Waterbury Area





See You At The fair

... Jane and Ruel Miller

Ladies ...

Enter our Rolling Pin Contest

At 3:30 PM Saturday



**Calling all Men: Join us at
The Rubber Mallet Throw
At 4:00 PM Saturday**





Adult-Teen-Children
Art Classes • Workshops • Camps

NOW AT BALL AND SOCKET ARTS!

493 West Main Street • Building #2 • Cheshire CT 06410

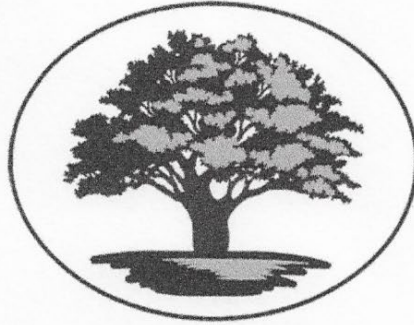
www.artsplacecheshirect.org • 203.272.2787

Supported by
Friends of CPFA Artsplace, Inc.



Funding the **Art Heals** Program
offering private art lessons for homebound adults at no cost
www.artsplacefriends.org • 203.272.2541





THE LAW OFFICES OF
Joseph E. Bowman
— L L C —

315 Highland Avenue
Cheshire, Connecticut

Phone (203) 272- 5291

www.CheshireLawyer.com

**A LOCAL LAW FIRM TO HANDLE YOUR
PERSONAL AND BUSINESS RELATED
LEGAL NEEDS**

Barker Specialty supports
Cheshire Grange

EXPAND YOUR BRAND!

PROMOTIONAL MERCHANDISE SOLUTIONS
THAT FIT YOUR BRAND IDENTITY



**BARKER
SPECIALTY**

800.227.5377 | barkerspecialty.com